



Introduction

The EnGenius EWS Series Wireless Management Switches provide fully managed L2 switching capabilities and PoE+ support while EWS Wireless Indoor and Outdoor Access Points connected to them can extend network to provide connectivity for a growing array of wireless client devices simplified one-to-many mode configuration and authorized to access network resources a company's internet connection. For efficient manageability, through an easy-to-navigate, browser-based Graphical User Interface (GUI), each EWS Switch also offers priority-based configurations depending on an IT manager's or network administrator's need. Together the EWS Switches and Access Points reach their full potential by allowing for quick deployment, simplified management and monitoring, and seamless concurrent upgrades, making the platform ideal for expansive or expanding business properties and operations.

Unpacking

Open the shipping carton and carefully unpack its contents. Please see the Packaging Contents (right) to make sure all the items are present and undamaged. Please note that the model you have purchased may appear slightly different. If any item is missing or damaged, please contact your local EnGenius reseller for replacement.

Package content

- Wireless Management Switch
- Rack Mount Kit
- RJ45 Console Cable
- Power Cord

Before you connect

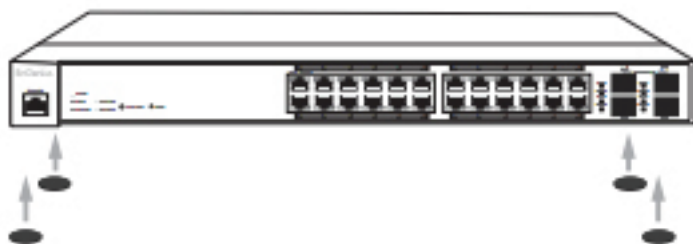
- Do not place heavy objects on the Switch.
- Do not expose the Switch to direct sunlight.
- Make sure that there is adequate space (at least 2 inches) for proper heat dissipation around the Switch. Please do not cover the ventilation holes on all sides of the Switch.
- Install the Switch in a fairly cool and dry environment.
- Install the Switch in a site free from strong electromagnetic source.
- Visually inspect the power jack and make sure that it is fully secured to the power Cord.



1. Switch Installation

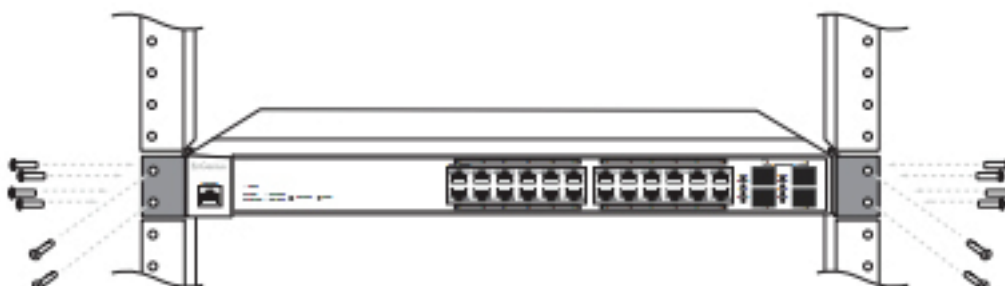
A. Installing the Switch on a Flat Surface

Install the Switch on a flat surface such as a desktop or shelf, attach the rubber feet on the bottom at each corner of the Switch. The rubber feet cushion the Switch from shock or vibration, and secure space between devices when stacking.



B. Rack Installation

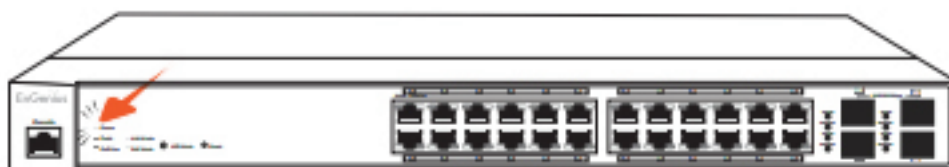
To mount the Switch onto a rack, attach the included rack mounting brackets to the Switch. Then secure the mounting brackets to the rack. The Switch can be mounted in an EIA standard size, 19-inch rack, which can be placed in a wiring closet with other equipment.



2. Connecting to the Switch

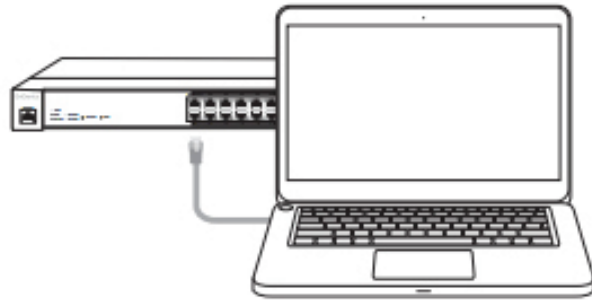
Connecting the Devices to the Switch and Managing the Switch using a Web Browser

Step 1: Connect the supplied Power Cord to the Switch and plug the other end into an electrical outlet. Verify the Power LED indicator is lit on the Switch.

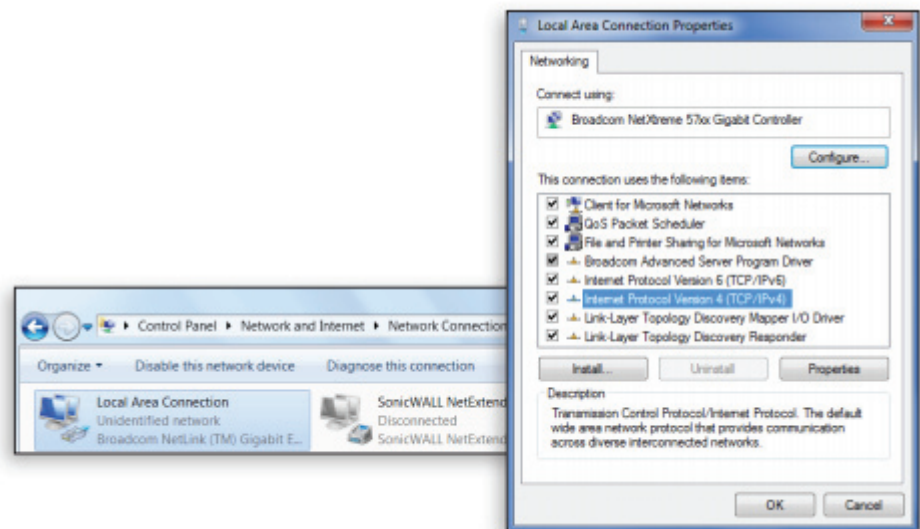


Step 2: Wait for the Switch to complete boot up. It might take few minutes for the Switch to complete boot up.

Step 3: Connect one end of a Category 5/6 Ethernet cable into the Gigabit (10/100/1000) Ethernet port on the Switch's front panel and the other end to Ethernet port on the computer. Verify that the LED on Ethernet ports of the Switch is green.



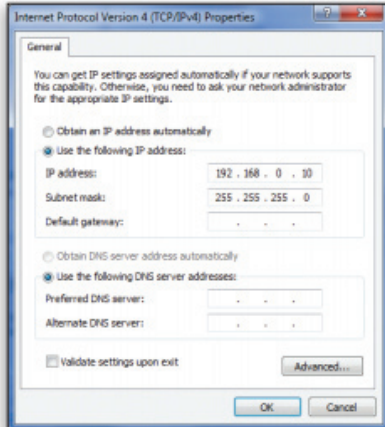
Step 4: Once your computer is on, ensure that your TCP/IP is set to **On** or **Enabled**. Open **Network Connections** and then click **Local Area Connection**. Select Internet Protocol Version 4 (TCP/IPv4).



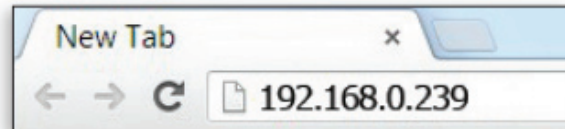


Step 4B: If your Computer is already on a network, ensure that you have set it to a Static IP Address on the interface.

(Example: 192.168.0.10 and the Subnet Mask address as 255.255.255.0.)

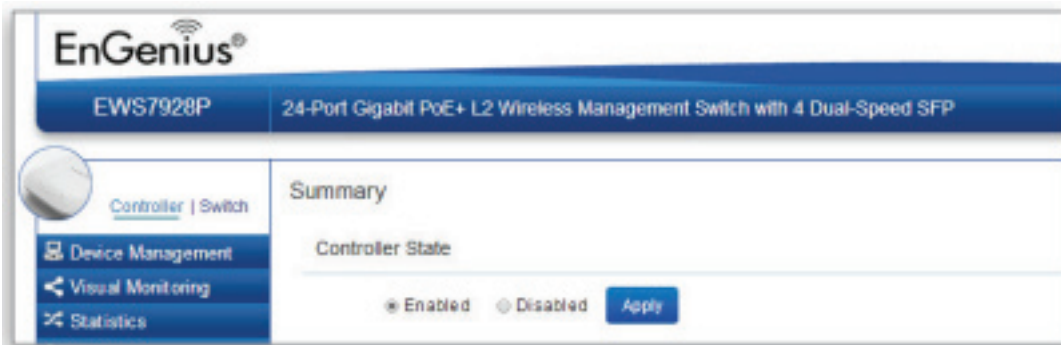


Step 5: Open a web browser on your computer. In the address bar of the web browser, enter 192.168.0.239 and enter.



Step 6: A login screen will appear. By default, username is **admin** and the **password** is password. Enter the current username and password of the Switch and then click Login.

Step 7: The EnGenius Wireless Management Switch User Interface will appear. Make sure the **Controller State** is set to **Enabled**.





3. Device Management

Locating Wireless Managed AP(s)

Step 1: Go to **Device Management** and select **Access Points**. All Managed AP(s) connected to the same network as the Wireless Management Switch will appear on the right side of the screen, under the Access Point **AP(s) Detected** list.



Step 2: To manage the Managed AP(s), select the desired Managed AP(s) by checking the boxes and click **Add**.

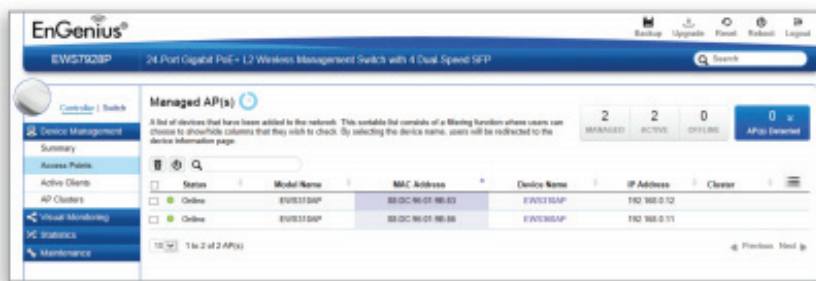
Step 3: You will be prompted to enter an IP Address range for the Managed AP(s).

- Select **DHCP** for an IP Address to be assigned automatically if there is a DHCP server in the network.
- Select **Static** to enter the IP Address, Subnet Mask, Gateway, and DNS Server manually. Click **Apply** to continue.



Managing Wireless Managed AP(s)

The Managed AP(s) that are successfully being managed will be listed under the Managed AP(s) list. Click on the **Device Name** to access to its Configuration settings. Please refer to the Wireless Management Switch User Manual for more information on configuration settings.



Managing Wireless Management Switch

For further Switch configurations, click on **Switch** at the top left of the dashboard. Refer to the Wireless Management Switch User Manual for more information on configuration settings.



Noot:

Maximale databereik is gebaseerd op de IEEE 802.11-standaarden. Werkelijke doorvoer en bereik kan variëren afhankelijk van vele factoren, waaronder milieu-omstandigheden, de afstand tussen de apparaten, radiostoring in de werkomgeving en de mix van apparaten in het netwerk. Functies en specificaties kunnen zonder voorafgaande kennisgeving worden gewijzigd. Handelsmerken en geregistreerde handelsmerken zijn het eigendom van hun respectieve eigenaars.

Voor de Verenigde Staten van Amerika: Copyright © 2013 EnGenius Technologies, Inc.

